



Robin Tait '82 shoots on goal against Skidmore in Midd's 5-2 winning effort.

Photo by Lee McShane '82

Female pucksters struggle along

A young Middlebury womens' hockey team was annihilated by an aggressive and physically big Dartmouth Green team 8-1 last Saturday, but Panther Coach Duke Nelson said his team played strongly after giving up four goals in the first five minutes.

In its first varsity year, the women's hockey team is now 1-2. "This team is going to take the aches and pains any first year team will," Nelson said. "It (playing Dartmouth, one of the best teams in the east) was a good experience for us."

The Panther's main pro-

blem is a lack of depth. Nelson said many girls who played on the team last year either did not come out or went abroad. The team will go with three women defense for the rest on the year; the men have nine. "We're playing as good as we can," Nelson said. He hopes to build a program that will attract more women hockey players.

Against Dartmouth, the Panthers started looked and played as if they were intimidated at first, as Dartmouth scored five quick goals. The Panther's only goal

came later in the first period and was scored by Hannah Nichols '84 with an assist by Carolyn McCallum '83.

The team allowed only three goals in the next two periods. Ann Machado '82 played well on defense as did co-captains Maggie Gordon '83 and Sue Lyle '82. Robin Tait '82 had an outstanding game at center.

The team lost its first game to UVM 3-2 in overtime and beat Skidmore 5-2. The Panthers next host the Purple Cows of Williams tomorrow starting at 7:30.

Women's hockey routs Williams

By Ann McVay '82

The Middlebury women's hockey team upped its record to 2-3 with an 8-0 romp over Williams, Saturday night, Jan. 16, at Memorial Field House. The victory followed a tough overtime loss to Skidmore earlier in the week; a game in which Carolyn McCallum '83 scored the lone Panther goal.

Most members of the team agree that Saturday's win will provide them with the psychological boost they need to get back on the winning track. In what proved to be one of their best performances of the season, the Panthers overpowered their inexperienced Williams' opponents. Though the Ephwomen showed some improvement over last year, they were able to muster only nine shots on net while Middlebury countered with a total of 48. Tri-captain Sue Lyle '82 and junior Ali Bartle led the scoring, with three goals apiece. Bartle's hat trick was her second of the season, tying her with Mary

Menard '84 for the lead in overall points.

The first Panther goal came at 3:42 of the first period, with tri-captain Ann Machado '82 tallying her second of the season. Lyle followed at 5:51, hammering a shot from the left point between the pads of goalie Sara Bahn. Center Robin Tait '82 and wings Hannah Nichols and McCallum, who played extremely well throughout the period, were instrumental in setting up the Lyle score. The remainder of the period proved uneventful, and the Panthers left the ice with a 2-0 lead.

The start of the second period saw a more confident Middlebury team. Defensemen Lyle, Machado and Lisa Schmeichel '85 proved effective in skating the puck out of the Panther zone. Lyle twice maneuvered untouched from one end of the rink to the other, scoring two additional goals for the hat trick. Her efforts were interrupted at 8:21 of the period by a Menard tally from out front. The period ended with the Panthers having upped their

lead to 5-0.

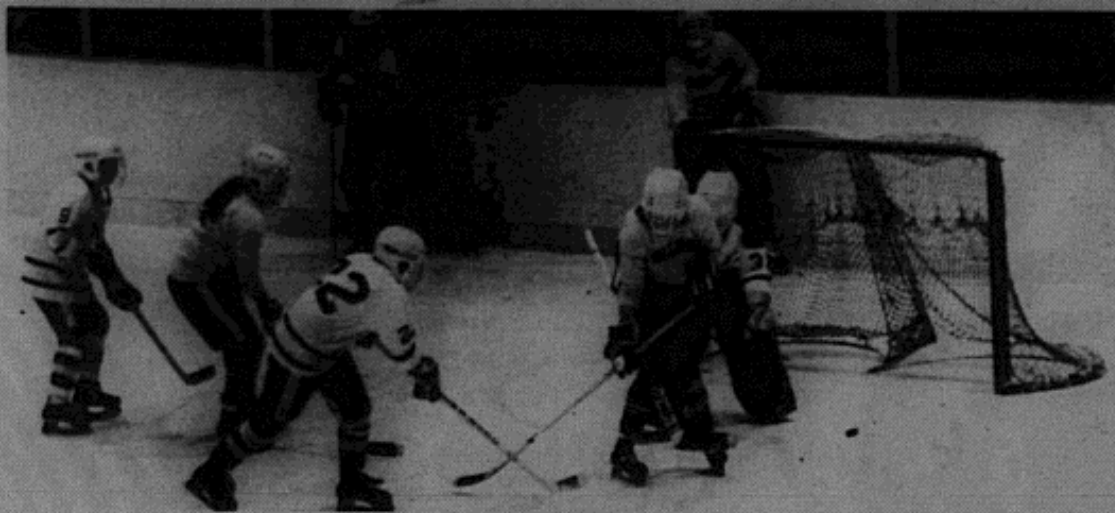
At the start of the third period, Gigi Kippen '84 replaced tri-captain Maggie Gordon '82 in the Middlebury net. With the help of an outstanding performance by Bartle, Kippen was able to seal the Panther shutout. Bartle scored three unanswered goals during a brief five minute span, the last of which was a shorthanded wrist shot from the left side. The unusually large crowd greeted Bartle's third tally by flooding the ice with hats. Lee McShane '82 and Menard

were largely responsible for setting up the Bartle goals.

Coach Duke Nelson said he was extremely pleased with his team's performance. "Tonight marked the first time we were able to use the third line on a regular basis, which gave the first two lines the rest they needed. Williams was a good deal stronger than last year, and I was pleased with the way our defensemen were able to move the puck up the ice. Our passing was also a good deal better than it has been in recent games." The third line,

which was instrumental in the Panther victory, was centered by junior Meg Marion. She was flanked on either side by freshmen Jean Flemma and Kim Davis. Davis alternated shifts at left wing with Tricia Lenahan '84.

The Panthers faced RPI at home, Tuesday afternoon, then traveled to UVM Thursday night to face the Catskills. They then meet St. Lawrence in Canton, tomorrow afternoon. Their next home game is Wednesday, Jan. 27, at 4:00 against Dartmouth.



No. 22 Lee McShane '82 puts one on net against Williams.

Photo by Judy Ryan '83

Armchair Quarterback

Swimmers split with St. Michael's

...establishing himself as the Gavett, no stranger to the top line of excellent performance out the top ten. This strong Carnival extravaganza.

Icewomen win third in a row

By Ann McVay

The Middlebury women's hockey team stretched its winning streak to three games, with victories over Colgate and Hamilton this past weekend. The team's record now stands at 6-7 with two games remaining in its first varsity season.

On Friday, Feb. 12, Middlebury traveled to Hamilton, New York to face the Red Raiders of Colgate. In what proved to be one of their best offensive displays of the season, the Panthers demolished the Raiders 12-1. Most members of the team agree that the score could have been a good deal higher had Middlebury been able to capitalize on a number of additional scoring opportunities.

It took the travel-weary Panthers until 9:50 of the first period to penetrate the Colgate defense. Ali Bartle '82 sparked the Middlebury scoring effort with her tenth goal of the season. From that point on, Middlebury completely dominated the game. Judy Bonzi '82, Lee McShane '82, and Carolyn McCallum '83 rounded out the first period scorers to put the Panthers up 4-0.

The second and third

periods saw a confident Panther team putting more and more distance between themselves and the inexperienced Colgate skaters. A string of eight goals was interrupted at 6:21 of the second period by the lone Red Raider tally. Panther goalies Maggie Gordon '83 and Gigi Kippen '84 were successful in turning aside the remainder of the Colgate shots. Hannah Nichols '84 (2), Mary Menard '84 (2), co-captain Sue Lyle '82 (2), Bartle and Robin Tate '82 were responsible for the barrage of Middlebury goals.

On Saturday, Feb. 13, the Panthers faced the Continentals of Hamilton College in Clinton, New York. Again Middlebury proved the stronger of the two teams. Although the Panthers trailed 1-0 at the close of the first period, they rallied to play their best 40 minutes of hockey ever.

Co-captain Ann Machado '82 and McCallum connected for the first Panther goal at 8:45 of the second period to even the score at one. Nichols then put Middlebury out in front at 17:53 with a shot from the right side. From that point on, Middlebury dominated

the play. Had it not been for an outstanding performance on the part of Hamilton goalie Vickie Yettan, the score

would have been worse. Lyle rounded out the Panther scoring with her seventh and eighth goals of the season, both of which came in the final

period. Freshman Lisa Schmeichel was instrumental in setting up the second Lyle tally, her fourth in the two-game series.

Bombers upset Big Green

By Ted Reagle

The B-hockey Bombers closed out a successful season with a 6-5 victory over the Dartmouth J.V. squad. Playing with just 10 skaters, Middlebury played its finest hockey of the season in the upset win. Coach Frank Burke was especially pleased with his team's performance, commenting, "The guys played with a lot of heart and desire against Dartmouth, as they have all season long. I'm so damned proud of each and every one of them."

The Bomber's win was keyed by the two goal perfor-

mances of freshmen Robin Lorenz and Dave "Morty" Morton. Both were consistent players all season long for the Bombers, and since the end of the J.V. season, have joined the varsity. Two year B-hockey veterans Gene Cleaves '83 and Paul Drain '84 also tallied for the Panthers against the Big Green.

Much of the success for the fine B-hockey season can be attributed to the acquisition of Frank Burke '83 as head coach, and the toned down coachin approach of his assistant Duane Ford. The Bombers finished the season with a 6-6 mark that included

double wins over Skidmore and Norwich and victories over Williams and Dartmouth. In addition, the Bombers lost three different contests by a single goal. Coach Burke commented, "We skated head to head with some very good teams that had a lot of talent, and with a couple of breaks, our record could have been 8-4."

Middlebury faced St. Lawrence Tuesday afternoon at Memorial Fieldhouse. The team travels to Williamstown tomorrow for its final game of the season.



The B-Bombers in action against Dartmouth.

Photo by Lee McShane



Women skaters in action against St. Lawrence. From left to right are, Ann Machado, Maggie Gordon, Sue Lyle and Judy Bonzi.

Women romp over Williams 7-0

By Ann McVay

The Middlebury women's hockey team ended its season on a winning note with a 7-0 romp over Williams, Saturday afternoon, Feb. 20, at Williams' Field House. The victory followed a tough 4-1 loss to powerful St. Lawrence earlier in the week; a game in which Carolyn McCallum scored the lone Panther goal.

Saturday's game saw a confident Panther squad demolish a weaker, but much improved Williams' team. Middlebury controlled the puck throughout the three periods and with the help of some excellent play on the part of goalie Gigi Kippen '84, the Panthers were able to muster their third shut out of the season.

Robin Tate '82 sparked the

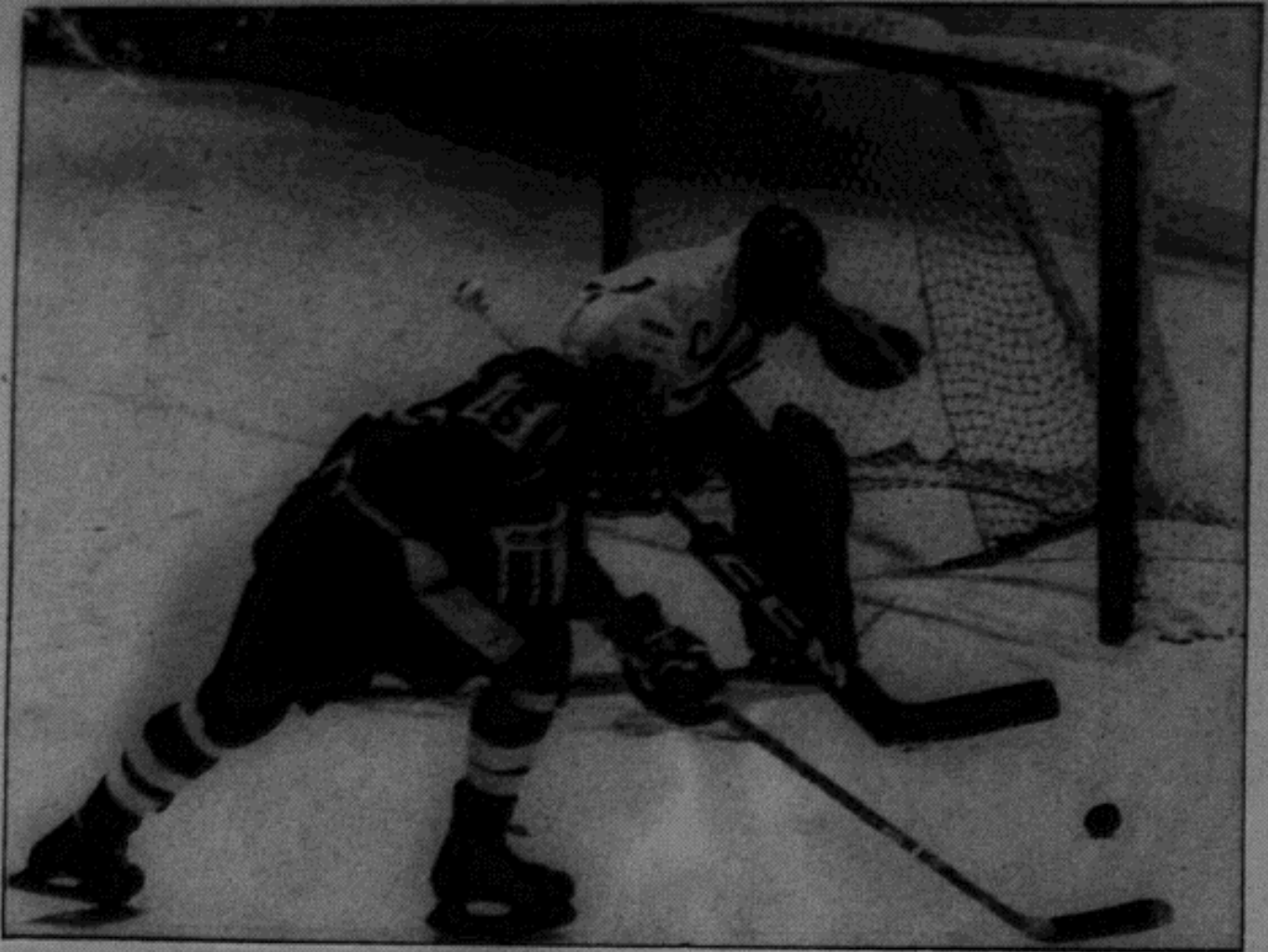
Middlebury offense with her first goal of the game at 2:33 of the first period, putting the Panthers out in front to stay. Jean Flemma '85, who replaced an injured Hannah Nichols '84 at right wing on Tait's line was responsible for the second Panther tally, her first of the season. At the close of the period Middlebury led 2-0.

The second period saw the Panthers put more distance between themselves and the inexperienced Ephwomen. Again Tait sparked the Middlebury offense with a goal at 0:17 of the period. The goal, a power play effort, came on a tip-in off a Sue Lyle '82 shot from the left point. It was here that senior Ali Bartle took control of the Middlebury scoring effort, hitting the net three consecutive times from

the left side. The Bartle tallies, two in the second period and one in the third, marked her third hat-trick of the season. Sophomore Mary Menard was largely instrumental in setting up the Bartle scores. The two forwards have worked extremely well together throughout the season.

Tri-captain Lyle was responsible for the final Panther goal. Lyle, fellow tri-captain Ann Machado, Tait, Lee McShane, Bartle and Judy Bonzi, were playing in their last varsity game. The performances of the six seniors will undoubtedly be sorely missed next season. However, Coach Duke Nelson is optimistic about his team's chances next year and is looking forward to the help of some experienced incoming freshman.

B
los
We
dle
ta
last
Fie
A
wer
bu
sho
Bol
tee
tie
'82,
for
ed
the
In
the
left
dle
the
as
C
she
out
Vil
Co
ga
the
21
bo
as
gr
ha
F
Ha
str
po



Senior co-captain Maggie Gordon protects the net against Dartmouth

Photo by Mark Bushnell

Women Show Little Punch

By Pat Campbell

A powerful Dartmouth squad spoiled the home opener for the Middlebury women's ice hockey team and its rookie coach Bob Ritter, with a 7-0 shutout last Saturday evening. The Middlebury women skated a hard game and looked especially strong in the second period, but were unable to put the puck in the net.

Senior co-captain Maggie Gordon kept Middlebury in the game with superb goaltending, making 51 saves. Gordon was also one of the few bright spots in the Panthers' earlier losses to UVM

and St. Lawrence. Against the Big Green, another highpoint for Middlebury was the second period power play skated by the veteran line of co-captain Carolyn McCallum, senior Mary Menard and sophomore Jean Flemma, supported by junior defensewomen Mary Borah and sophomore Lisa Schmeichel. Although Dartmouth posted a decisive victory with seven goals, coach Ritter feels that the team has shown marked improvement.

The Dartmouth game was Ritter's debut as head coach after taking the reins from Duke Nelson two games into the season. He felt that the

team really "hung in" against the tough Dartmouth squad. Coming off just one week of practice after the three week holiday break, Ritter has already made changes, moving freshman Dagny Bock to the offense and realigning the defense backups with sophomores Kim Davis and Polly Boswell.

It will be just a matter of time before the team adjusts to these changes and gains its first victory. With another week of practice behind them, the women go on the road in quest of their first victory on Jan. 14 against Skidmore and then to the Williams Tournament over the weekend.

S
C
wo
ye
tic
No
col
su
A
nu
gra
sen
the
Ab
pre
nov
res
tai
Ab
wil
coe
on
C
pla
str
Ju
sop
De
ret
spo
cor
Am

SCOREBOARD

MEN'S HOCKEY

Panthers	7
WESLEYAN	5
PANTHERS	6
Salem St.	6
Panthers	8
HAMILTON	5
ARMY	5
Panthers	3
St. Nicks (club)	7
PANTHERS	6
Panthers	3
UNION	2
PANTHERS	4
New England	2

MEN'S 'B' HOCKEY

KIMBALL	9
Panthers	4
Kimball	7
PANTHERS	1
NORTHWOOD	7
Panthers	1
Panthers	3
SKIDMORE	2

WOMEN'S HOCKEY

UVM	7
Panthers	1
St. Lawrence	9
PANTHERS	1
Dartmouth	7
PANTHERS	0

MEN'S BASKETBALL

Panthers	60
WESLEYAN	50
Panthers	58
CASTLETON ST.	57
Ithaca Tournament	First Round
Albany St.	86
Panthers	58
Ithaca Tournament	Consolation Game
Panthers	74
East Connecticut St.	73



PANTHERS	65
RPI	56
Panthers	69
ST. MICHAELS	68

HOME TEAM IN CAPITALS

WOMAN'S BASKETBALL

COLBY-SAWYER	72
Panthers	39
GREEN MOUNTAIN	58
Panthers	55

WOMEN'S SQUASH

Panthers	6
HAMILTON	1

WOMEN'S SWIMMING

Green Mt.	Did not show
PANTHERS	Win by forfeit

Skidmore	77
PANTHERS	51

NORTHEASTERN	110
Panthers	22

GAMES THIS WEEK

Men's Hockey Tonight at U. Mass.-Boston
Tomorrow at Babson
Jan. 19 HOME vs. Norwich (7 P.M.)

Men's 'B' Hockey Tomorrow at Norwich
Jan. 19 HOME vs. Williams (4 P.M.)

Women's Hockey Jan. 15-16, Williams Tournament

Men's Basketball Tonight at Bates
Tomorrow at Colby
Jan. 19 HOME vs. Union (7:30 P.M.)

Women's Basketball Jan. 15-16, Williams Tournament
Jan. 20 at St. Joseph's

Women's Squash Tomorrow at Williams
Jan. 17 HOME vs. Smith (3 P.M.)

Women's Swimming Jan. 19 HOME vs. UVM (5 P.M.)

Win Number One for Women's Hockey

By Pat Campbell

The Middlebury women's ice hockey team posted their first win of the season with an overwhelming 10-3 victory against Skidmore last week. Middlebury's record now stands at 1-3 after an impressive showing on the road.

Senior co-captain Carolyn McCallum led the team to victory with an amazing five goal performance. McCallum's linemate, junior Mary Menard, added a goal and two assists. Freshman Charlene Suprenant tallied the remaining four goals, assisted by line and classmates Dagny Bock and Emily Conant.

Senior co-captain Maggie

Gordon contributed another superior performance in goal, allowing rookie goaltender Allyson Rumsey to make her first appearance in the net during the third period.

Coach Bob Ritter was more than pleased with the team's effort. He felt that all of the players "pulled together and played some outstanding hockey." Coming off their convincing victory with just one day's rest, the team was eager to pack its bags and head off to the Williams tournament, to face Williams, Hamilton, and Colby. Tonight at 8 P.M. the Panthers hope to avenge an early season loss against a strong squad from UVM.

THE MID

es. It
ovie
, on
Red-
h of-
ami
ning
in
per
an
both
eak

ere
on,
his
ght
will
h a
will
big
At
ley
yet
ans
ed,
has
of-
ter
has
ng
lob

the
By
nd
of
ne,
rg-
nit
ver
he
ers
op-
nd
ole
ds
off
ts.
re
ho
rs

d,
te
n-
m
m
n
ot
re
ut
e.
e
d.
e
et
e
n
e

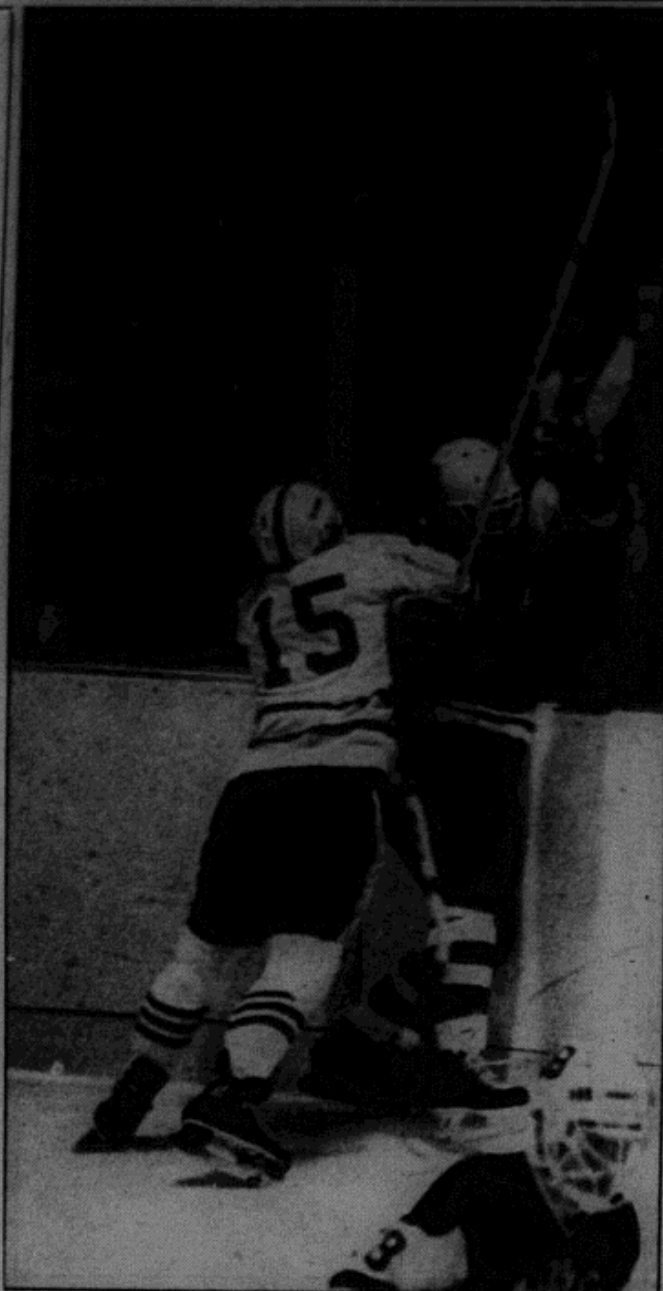


Photo by Mark Bushnell

Sophomore Marty Wenthe sticks it to a Cadet in a losing effort for Middlebury.

B's, Women Improve

By Pat Campbell

A vastly improved Panther women's hockey team skated its best game of the season last Friday, Jan. 21, against UVM only to come up short in a heart-breaking 6-4 loss. Middlebury played tough hockey the entire game and fired 35 shots on goal, while UVM countered with 38.

Senior co-captain Carolyn McCallum had another excellent performance, scoring two goals. Freshmen linemates Dagny Bock and Emily Conant each contributed a goal. Senior co-captain Maggie Gordon played a solid game at the

goal, fending off 32 UVM shots.

Coach Bob Ritter felt that both teams played a "great" game, and that the teams were virtually even until the third period, when the Panthers were hurt by three "stupid penalties."

The Panthers hope to even up their 2-5 record this week as they take on the Big Green of Dartmouth in Hanover, the Williams Purple Cows at home tonight, and a tough Wesleyan squad on the road Jan. 29.

Coach Ritter is optimistic about the team's improvement and looks to make his first season a winning one.

P
g
w
o
t
n
la
th
o
p
6-
o
lo
st
ou
cr
al
22
he
in
ca
to
di
th
pe
w
fir
Hi
M
th
s

claim an Eastern Championship.

Senior Cullen Morse shows determination in the stretch.

Women's Hockey Finishes

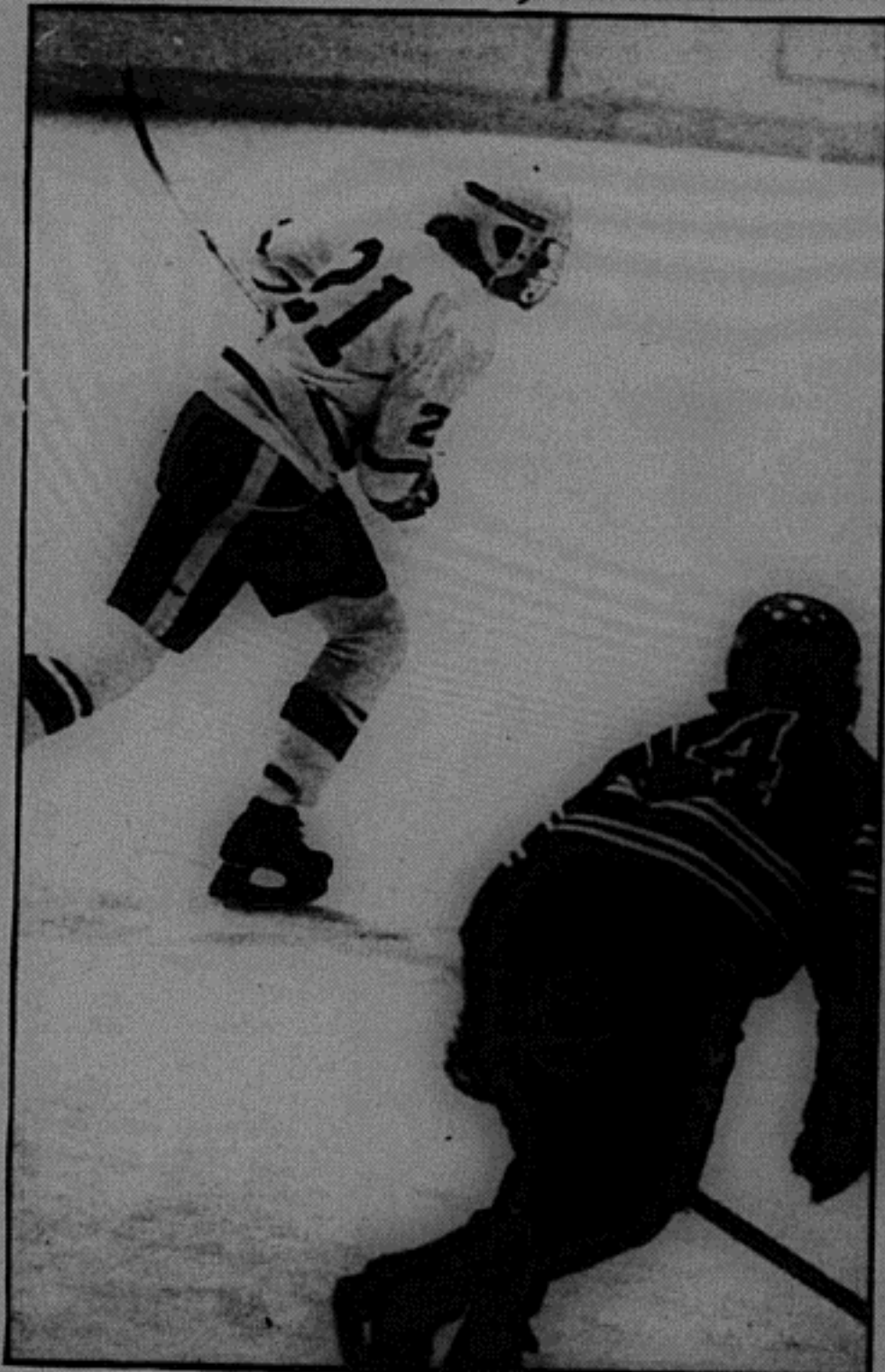


Photo by Mark Bushnell

Junior Mary Menard skates toward the winning goal in a 5-4 overtime win against Hamilton. The women's hockey squad won its last three games to finish with a record of 7-6-1. First-year coach Bobby Ritter led the team along with senior co-captains Maggie Gerdon and Carolyn McCallum. Next year's team should be just as strong because many underclassmen are returning.

mandin
Once
establ
coasted
Thomas
was tou
we had
were

The of M r

Thomas
dog alv
we had
The St.
ed in a
the sco

Follow
start to
left on
back
William
dlebury
Ephmer
but en
toughe
around.
home c
ed up
thers,
catch-up
against
goalten
Dave Fr
goalten
Kenny
but he
William

On the
dlebury
Mike Lo
ty Went
played
of hocke